

1. Substrate

Suitable substrates are **SPORTEC®** floor coverings, such as **SPORTEC® color**, **SPORTEC® purcolor** or **SPORTEC® UNI classic**. The substrate must be level, dry clean and free of contaminants that may affect bonding of the foil.



Suitable substrate made of **SPORTEC® color 15**

2. Design Planning

Planning the design carefully before and make sure that enough space is available for applying it subsequently. Determine the dimensions of the room and check carefully for accuracy.

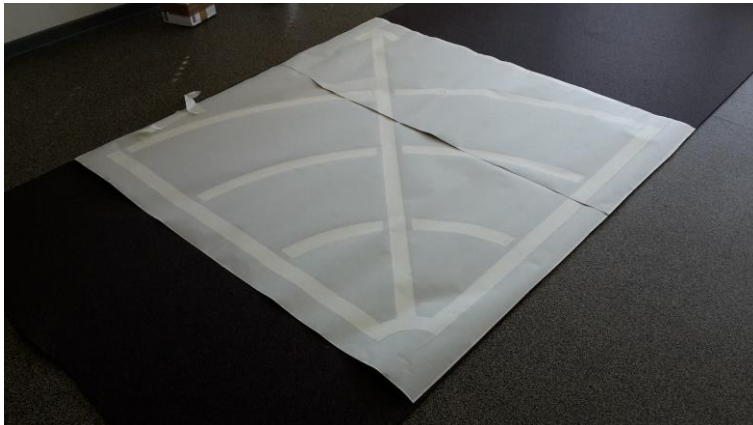


Different variations of designs

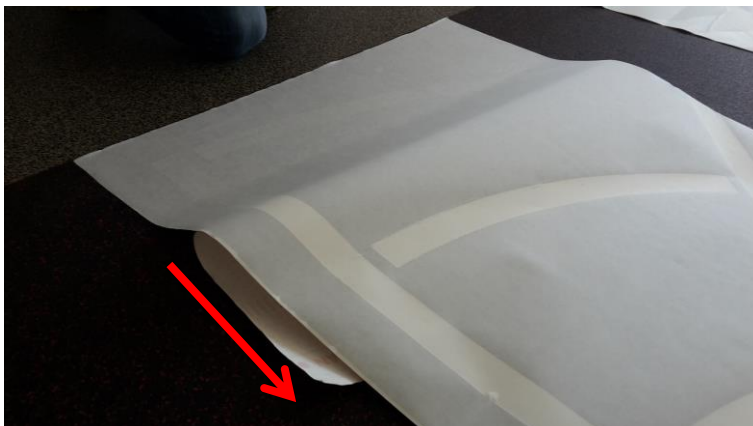
The installation recommendation is not subject to any change service! All information is without guarantee.
Latest version of this document available on www.kraiburg-relastec.com/sportec

3. Affix the templates

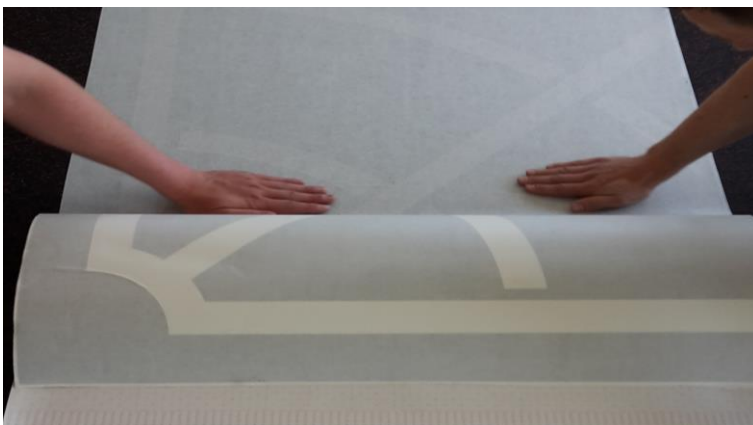
Before applying the templates to the flooring, the flooring has to be brushed and cleaned in detail.



Lay the template down on the correct site and check for accuracy.



Sticking the template on the **SPORTEC®** floor covering by pulling off the back of the tape and sticking the adhesive side to the ground.



Pull of the lower adhesive sheet carefully and press the template to the ground.

The installation recommendation is not subject to any change service! All information is without guarantee.
Latest version of this document available on www.kraiburg-relastec.com/sportec

Accessoires**Installation Recommendations no. 9145 - R - 04**

Issue: July 2016



If a template consists of several parts adapt them precisely to each other and glue overlapping.



If the template is glued to the ground, the upper adhesive sheet has to be removed. For this detach the foil at one corner / edge and remove it complete.



If all adhesive sheets are removed, the surface is ready for applying the color paint.

The installation recommendation is not subject to any change service! All information is without guarantee. Latest version of this document available on www.kraiburg-relastec.com/sportec

page 3 of 5

Accessoires

Installation Recommendations no. 9145 - R - 04

Issue: July 2016

4. Applying the line marking paint



Apply the paint with an appropriate roller the 2-Component Polyurethane paint and let it dry.



Before the paint is fully cured remove the template carefully.



The finished line marking paint may not be entered until the complete curing of the paint.

The installation recommendation is not subject to any change service! All information is without guarantee.
Latest version of this document available on www.kraiburg-relastec.com/sportec

5. Important details

The floor covering on which the templates will be applied must be dry and clean.

There are at least two people needed to apply the template and the line marking paint.

The ambient temperature for sticking the templates and applying the line marking paint should be between 10° C and 25°C.

Two persons need for affixing one template about 30 minutes; applying the paint takes approximately another 15 minutes.

Needed materials for applying the line marking paint are gloves, paint roller and paint tray.

In case of claims caused of falsely delivered goods, defect goods, insufficient quantities or other possible faults make a claim immediately and stop the installation directly. A claim of delivered material is only possible with untreated material and with declaration of the order number.

DISCLAIMER:

These recommendations for applications and installation are based on our extensive experience and on current technological practice. Our liability and responsibility in the event of damages shall be limited to the extent defined in our General Terms and Conditions of Business, regardless of the above recommendations or of any statements made or advice given by our sales representatives or applications engineering staff.